

## Information Mobility. Form Automation From the Field.

### Wireless. Paperless. Effortless.

Forms2Base reduces form-based data gathering into two simple steps. Fill out an electronic form on your TabletPC and the "Send" icon. Trips to the office, the deciphering of handwriting, manual data entry and processing of paper are all things of the past with Forms2Base.



### From Paper to Tablet PC.

Your forms won't lose their format. Simply scan and upload your company forms to Forms Designer then add characteristics for each field. This includes fields for printed text, numeric input, alpha-numeric input, dates, bar codes, data mapping, photos and calculations. Then publish the digitized forms wirelessly to TabletPCs via the F2B server for immediate use by field

personnel. Completed forms are then transmitted back to the office as an email attachment or passed to an enterprise "back-end" system using an industry-standard XML interface.

### Forms2Base Key Features:

#### Electronic Forms Look Like Existing Paper Forms -

No learning curve or loss of productivity. Training costs are reduced!

#### Pen based input -

Handwriting is converted to digital data.

#### Embedded Communications

Complete a form and hit the "Send" button on the Tablet routing it to all recipients.

#### Digital Camera -

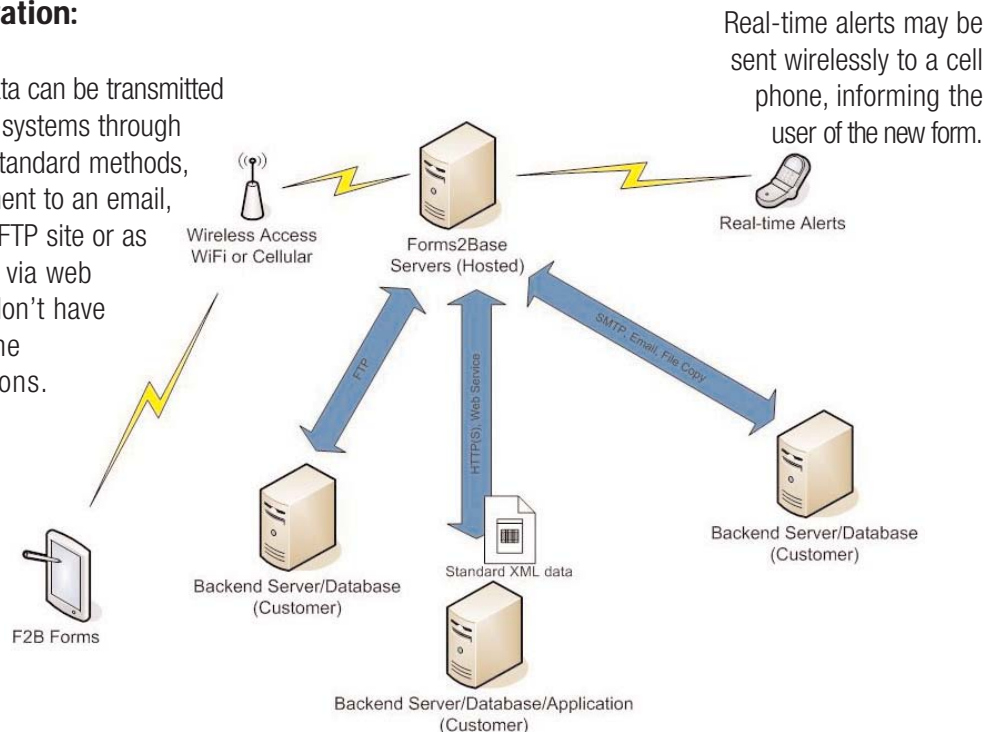
Photos can be added to forms with "point and tap" ease of use.

#### No Math Errors -

Totals, rates, prices and more are automatically calculated.

### Form Data Integration:

Digital form data can be transmitted to back office systems through one of three standard methods, as an attachment to an email, as data to an FTP site or as standard XML via web service, you don't have to manage the communications.



Real-time alerts may be sent wirelessly to a cell phone, informing the user of the new form.



# Design Forms At Your Desktop

### Key Features:

**Field Calculations** - Just like your typical spreadsheet with automatic formulas and calculations!

**Attribute Settings** - Assign attributes to text, just as you would in word processing documents.

**Bar Coding** - Read bar code data with any handheld barcode device.

**Drop-Down Menu Functionality** - Use our drop-down calendar for accurate date selection.

**On Form Help** - Our help button feature assists in training.

**XML Mapping** - XML output is defined.

**Routing Information Setup** - The user may customize the routing setup for forms or choose to automate.

**Field Definition** - Maintain handwriting or choose to digitize in any field.

**Multi-Page Form Support** - Easy to navigate support system.

**Form Validation** - Ensure compliance before forms are sent.

**Our Forms Designer application will walk you through the forms building process.**

**Duplicate your paper forms easily.**  
Simply scan your paper forms and open them with the Forms Designer program. Manipulate the format and fields, assign attributes and more. Complete your client-required forms or reports and expedite their delivery!

**Take control.**  
Forms Designer provides a centralized system for revisions and the administration of forms and users. You designate a form's routing and recipient list.

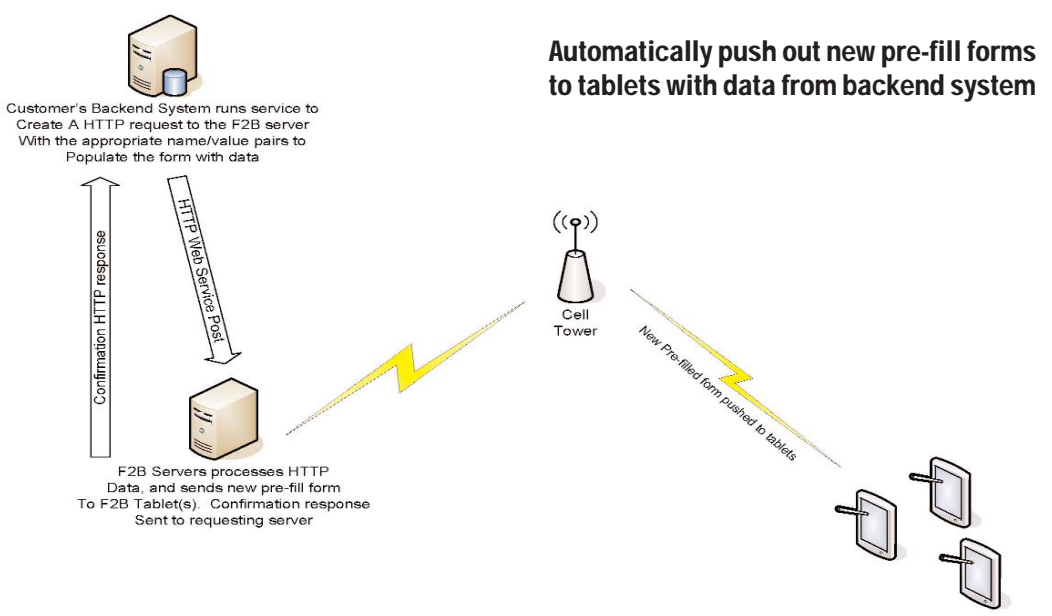
**One-click publishing.**  
When your ready to publish your forms, simply submit to the Field2Base server and we'll do the rest! Field users are automatically updated with new forms and updated data.

## Advanced Functionality

**Smart Fill** - Populate fields on a form with data from the last completed form. This is useful for forms that are completed often with similar data elements (weather, addresses, project names, etc.).

**Prefill** - Publish forms with a set of prefill data that has been provided by the company administrator. Project numbers, purchase order numbers, demographic data, client names, equipment allocated to jobs, and more - prefill functionality eliminates excessive manual input.

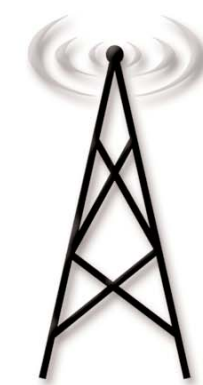
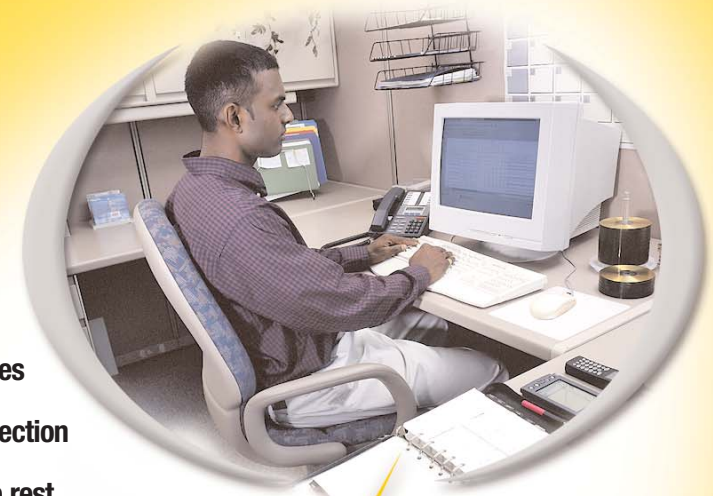
**Label Fields** - Label Fields are common for forms that will be integrated into backend database systems. They can be designed in Forms Designer and may be hidden or visible on the actual form image.



# Capture and Communicate Data From the Field

### Field Users!

- No skills needed to address connectivity issues
- Never worry about wireless coverage or bandwidth issues
- Work while disconnected - no need for an Internet connection
- Complete paperwork one time and let the system do the rest



### Capture and Communicate Data From the Field

- Cut costs and improve the productivity of your mobile workforce
- Streamline forms-related workflow and processes
- Improve the quality of data captured in the field and transmitted to back office systems
- Ensure compliance with requirements for paper and electronic records

Field2Base develops and markets Tablet PC-based mobile workforce solutions that leverage its proprietary, integrated wireless communications software. The Field2Base solution is industry agnostic, thereby giving any company the ability to manage sales force, field service, construction, inspections, home building and engineering field processes and to digitize and optimize information flow from the field to back end systems. Field2Base has been recognized as an official Microsoft Tablet PC Partner for its software applications and is an official Lenovo Business Partner.

[www.field2base.com](http://www.field2base.com)

919.462.8500



101 J. Morris Commons Lane, Suite 115  
Morrisville, NC 27560