



RP
REALTY PARTNERS, LLC
Real Estate Acquisition, Finance and Management

www.waverlycary.com



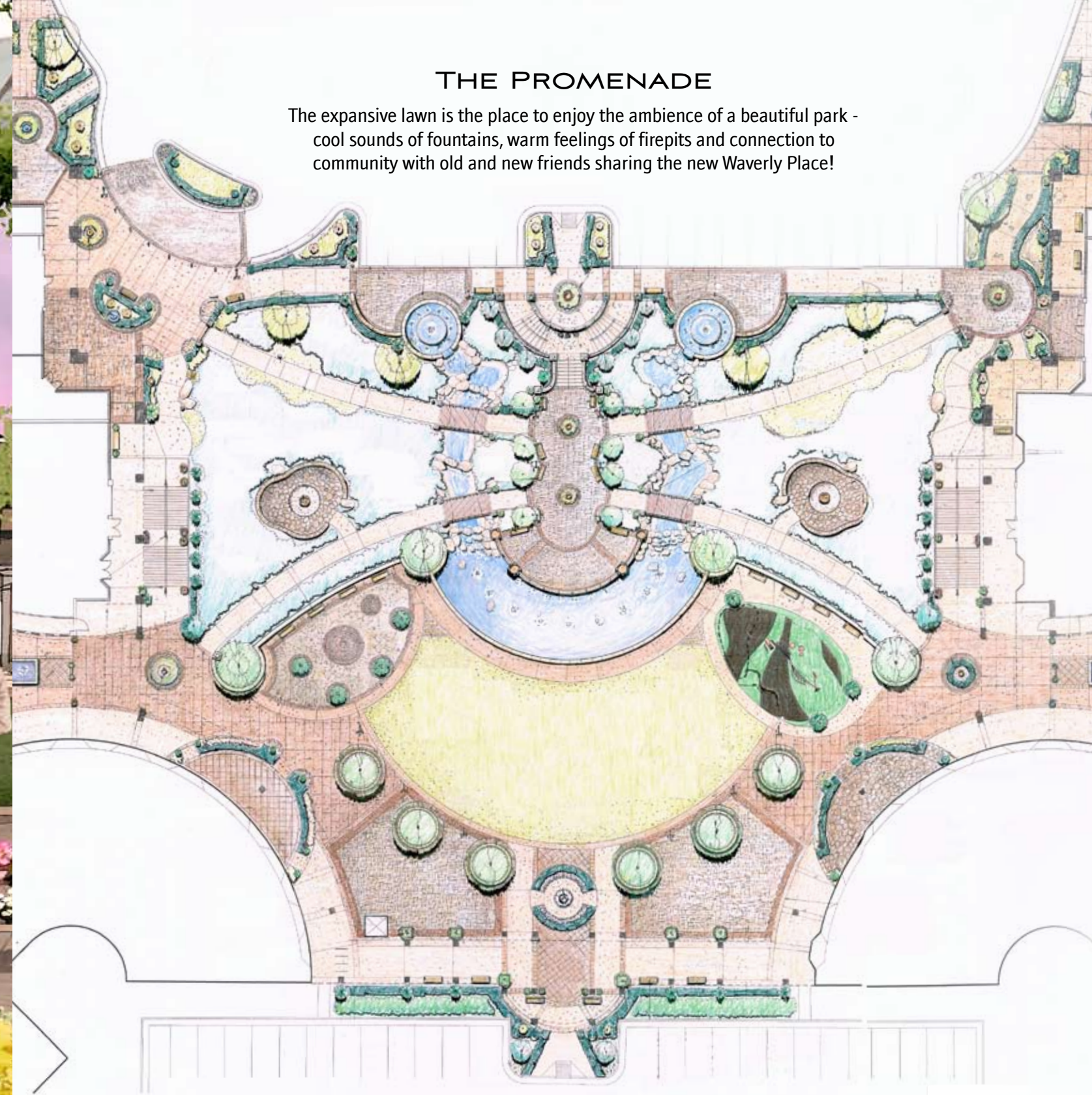
Whatever You Want - At Waverly





THE PROMENADE

The expansive lawn is the place to enjoy the ambience of a beautiful park - cool sounds of fountains, warm feelings of firepits and connection to community with old and new friends sharing the new Waverly Place!



**PREPARE
TO BE
IMPRESSED.**

**200,000 sf of
upscale retail at
Kildaire Farm Road
& Tryon Road
Cary, NC**

Reserve your space in
Waverly Place and
serve an unbelievably
upscale demographic with
an average household
income exceeding
\$150,000 within a
1-mile radius!



Elegant, Unique & Family-Friendly

Waverly Place will offer a unique mix of elegant and family-friendly retail, restaurants and amenities. Cary's newest lifestyle shopping destination will surround you with beautiful landscaping and water features. Terraces overlook The Promenade with the stage and children's play area designed to entice the whole family.

WELCOME TO CARY'S SHOPPING & ENTERTAINMENT DESTINATION



Bring your chairs and find a spot on the Promenade lawn to take in one of our many musical and entertainment events.

Let the kids have some fun in the playground or take a splash in our dancing water fountain! And when night falls, you can warm up in the crisp evening air by one of our stone firepits.

Shop until you drop in one of our many shops and boutiques.



Late for dinner? Let the valet park your vehicle and join your friends.



Or maybe you've had a week you'd like to forget? Then stop by Waverly Place for a day you'll always remember. Enjoy an espresso, shoe shopping, then have a relaxing afternoon at the spa.

**IT'S WHATEVER
YOU WANT AT
WAVERLY PLACE.**



A New Look...



A NEW SHOPPING EXPERIENCE!

An Impressive Location!

THE RALEIGH/CARY METRO AREA HAS CONSISTENTLY RANKED AMONG THE BEST IN THE NATION:

- #3 Hottest Job Growth City for the Next Decade
- BNET.com
- #8 Best Place to Live
- Relocate America.com
- #1 Smartest City
- TheDailyBeast.com
- #3 Best Place for Business and Careers
- Forbes.com
- #2 Cheapest Midsized Market to do Business
- KPMG

- #3 Market for Young Adults
- Portfolio.com/bizjournals
- #1 Healthiest Housing Market (Raleigh-Cary, NC)
- Hanley Wood Market Intelligence
- #3 Well-Being (Raleigh-Cary, NC)
- Gallup-Healthways
- #3 Area in Five-Year Jobs Growth (Raleigh-Cary, NC)
- Buffalo Business First
- #1 Top Business Climate in 2009 (North Carolina)
- Site Selection
- #3 Best Place to Launch a New Business
- Portfolio.com/bizjournals
- #10 Best Performing Cities (Raleigh-Cary, NC)
- Milken Institute
- #3 Best Places to Launch a Small Business
- CNNMoney.com



Quick Facts

■ Location:	Kildaire Farm Road & Tryon Road, Cary NC		
■ Traffic Counts:	28,000 vehicles daily on Tryon Road 29,000 vehicles daily on Kildaire Farm Road		
■ Demographics:	1-mile	3-mile	5-mile
2009 Population	5,202	61,494	156,145
2009 Average HH Income	\$157,529	\$127,249	\$106,903

Whatever You Want - At Waverly.

